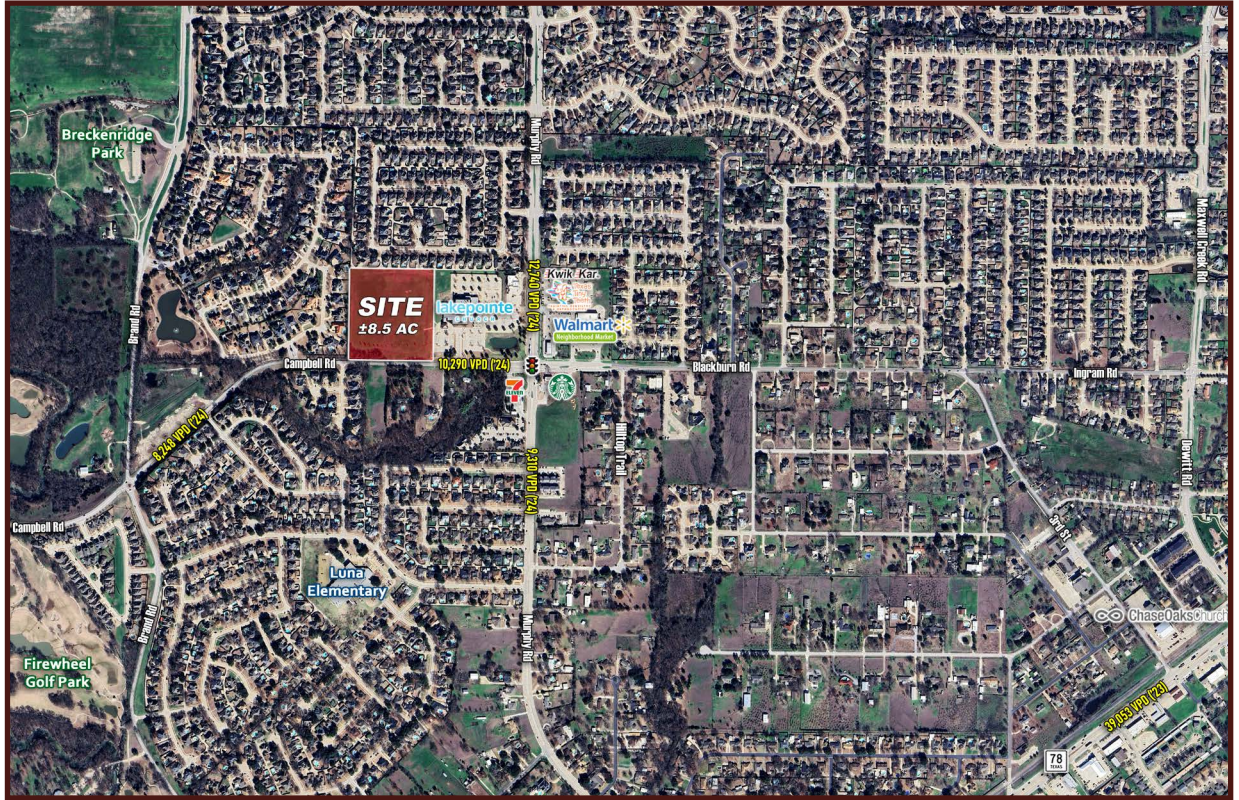


## ±8.5 ACRES LAND

## FOR SALE

NWQ Campbell Rd & Murphy Rd, Garland, Texas 75044



### LOCATION:

NWQ Campbell & Murphy  
Garland, Texas 75044

### AVAILABLE:

±8.5 Acres

### ZONING:

PD 06-67 | Community Retail

### SALE PRICE:

Contact Broker

### TRAFFIC COUNTS:

Campbell Rd: 10,290 vpd  
Murphy Rd: 12,740 vpd  
(Kalibrate 2024)

### PROPERTY INFORMATION:

Located just west of the signalized intersection at Campbell Rd & Murphy Rd on the edge of Garland and Sachse

Adjacent to Lakepointe Church

Close proximity to Breckenridge Park and Firewheel Golf Park

### DEMOGRAPHICS:

|                 | 1 mile    | 3 miles   | 5 miles   |
|-----------------|-----------|-----------|-----------|
| 2024 Population | 8,308     | 97,517    | 271,959   |
| Daytime Pop.    | 5,469     | 85,822    | 229,717   |
| Households      | 2,791     | 34,228    | 93,960    |
| Avg. HH Income  | \$202,073 | \$157,513 | \$135,584 |

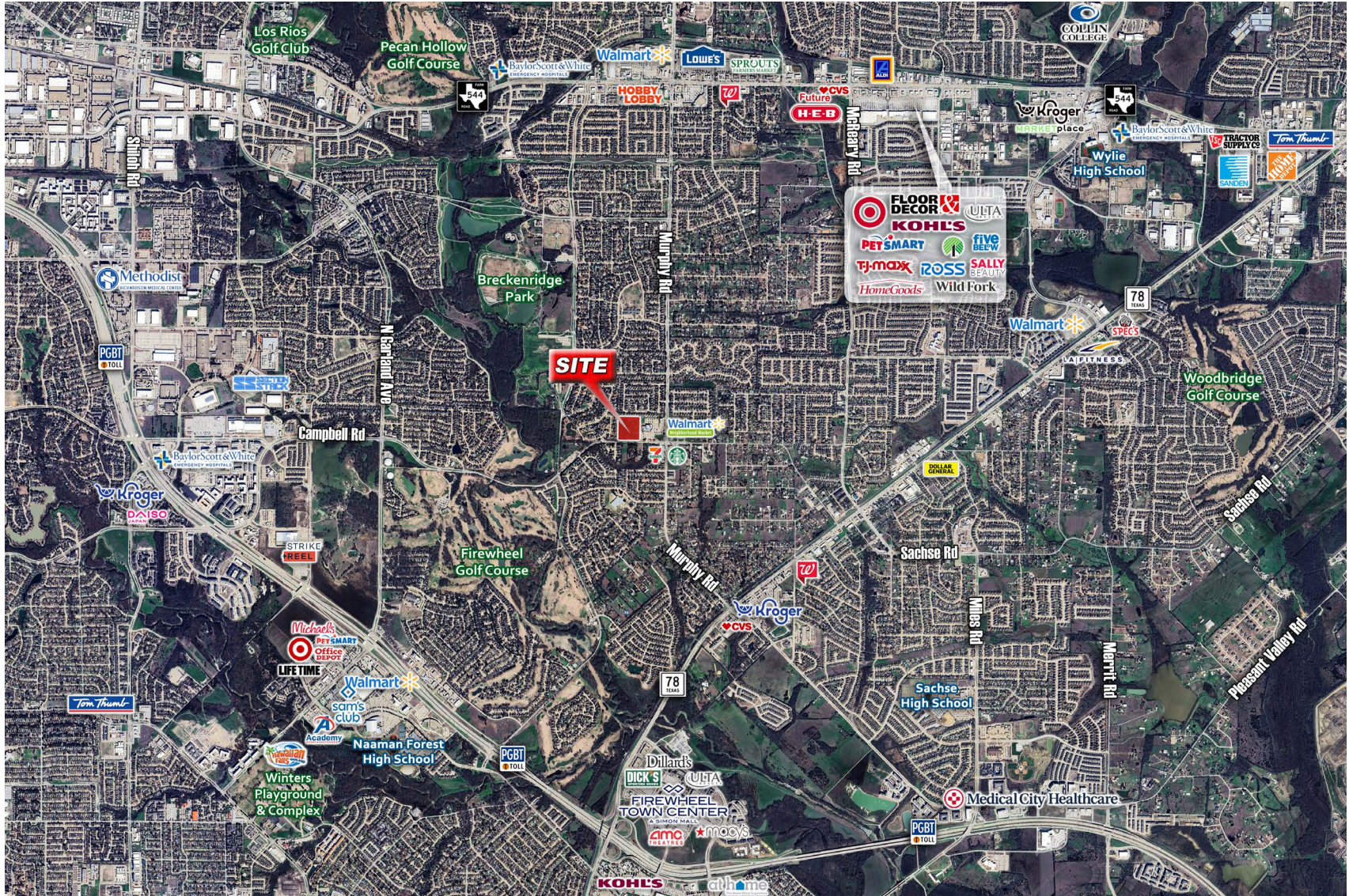
# BRIDGE POINTE

commercial real estate

## 8.5 ACRES RAW LAND

## FOR SALE

NWQ Campbell Rd & Murphy Rd, Garland, Texas 75044



For more information, please contact David English

214-676-6424 • [denglish@ridgepcre.com](mailto:denglish@ridgepcre.com)

ridgepcre.com  
972-961-8532

The information contained herein was obtained from sources believed reliable, however, Ridge Pointe Commercial Real Estate ("Licensee") makes no guarantees, warranties or representations as to the completeness or accuracy thereof. The presentation of this property is subject to errors, omissions, change of price or conditions, prior sale or lease or withdrawal without notice. Texas law requires licensee to disclose that it is representing the Seller/Landlord in the marketing of this property.

